

NAME .....

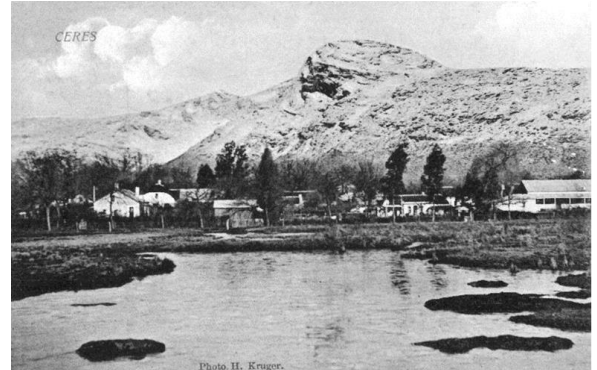
GR .....

**Read the following and circle the correct word in brackets.**

The first inhabitants in the area were known as the **(San/Zulu)**. In 1848 **(Michell's pass/ Bainskloof)** was completed and contributed in such a way that the town of Ceres could be established. **(Jan van Riebeeck/AG Bain)** was the road builder of the pass.

The first farmers in the area produced **(fruit/grain)**.

The town of Ceres was named by Mr Andrew Geddes Bain/Mr Michell and named after a village in Scotland. Ceres originated in **(1949/1849)**. The name of the farm on which part of Ceres developed was called **(Boplaas/ Rietvallei)**.



The river that flows through the town is called the **(Vaal River/ Dwars River)** and the bridge built over the river is called the **(Van Breda bridge/ Leipoldt bridge)**.

The first bank in the town was the **(Standard Bank/Capitec Bank)**.



The museum was first used as a **(flourmill/ guest house)** before it became a museum.



In 1976 the **(St Andrews church/Methodist Church)** almost completely burned down and was rebuilt again. The church no longer has the beautiful, thatched roof it had, but has been rebuilt with the same beautiful stone.



The area where the first African inhabitants lived in Ceres was known as **(Sakkiesbaai/Tulbagh)**.

In 1969 a **(big snowstorm/earthquake)** hit the town which left many people without homes and many structures damaged

